

PGP CERTIFICATE SERVER 1.0

Scalable, Flexible Certificate Management

It's no longer necessary for each user of encryption software to maintain a personal database of the certificates of every other user. With the PGP® Certificate Server organizations can easily create and manage a unified public-key infrastructure that enables confidential communications across a corporate intranet, extranet, or the public Internet. This scalable, flexible foundation for certificate management relies on and supports the worldwide de facto standard for encryption and digital signatures: PGP.

Efficient certificate storage and querying

PGP Certificate Server dramatically streamlines the process of posting and managing certificates by combining the Lightweight Directory Access Protocol (LDAP) directory with the benefits of PGP certificates. The LDAP directory receives and processes incoming PGP certificates, indexes the attributes for easy search and retrieval, and automatically updates certificates when changes are made. Because data is stored by individual attribute, users can perform both granular and complex searches for fast, reliable results. When used with the Certificate Server Replication Engine, PGP Certificate Server allows certificates to be distributed and synchronized across multiple servers.

Flexible configuration and policy management

PGP Certificate Server simplifies certificate management by including configuration and policy templates that can be easily customized to an organization's specific requirements. Administrators can quickly establish the policies that a certificate must meet—for example, approval by one or more authorized individuals—before it can be placed on a particular server. Once basic requirements are met, advanced filters can be used to carry out such tasks as automatically removing extraneous user IDs and signatures. Administrators also can configure the system to control server access, define access privileges, restrict server functions, and configure replication between Certificate Servers.

Easy installation and operation

PGP Certificate Server is easy to install and use. Seamless integration with PGP client software is assured through support of LDAP and HTTP protocols. A Web interface allows administrators to remotely manage the Certificate Server, performing a variety of functions including configuration, reporting, and status checking. Server configuration including general server values, policy management, and replication components can be viewed and updated through this easy-to-use web interface.

- Scalable centralized storage and management of digital certificates
- LDAP-based directory for efficient certificate distribution and searches
- High-performance certificate management engine
- Fast certificate retrieval with multiple-attribute searches
- Customizable values for server configuration and policy management rules
- Web-based interface for easy configuration, monitoring, and administration
- Support for server replication



PRETTY GOOD
PRIVACY™

PGP CERTIFICATE SERVER 1.0



SCALABLE CERTIFICATE MANAGEMENT

- Built upon LDAP directory
- Receives and processes incoming PGP certificates
- Automatic merging of certificate updates
- Attributes indexed for fast search and retrieval
- Granular and complex searches
- Support for replication between servers, including Change, Disable, and Delete requests

POLICY CONFIGURATION OPTIONS

- Configurable policy requirements for certificate storage
- Advanced filtering to remove extraneous data
- Authenticated requests support Add, Delete, and Disable
- Remote administration, monitoring, and configuration via Web-based interface

ADMINISTRATIVE CONTROLS

- Access control by IP address or host name
- Access control configurable for specific features, including administrative functions
- Anti-spam feature to prevent data mining of Certificate Server
- Access logging, error logging, reporting, and audit trails

COMPATIBILITY AND INTEGRATION

- Support for LDAP and HTTP protocols
- Seamless integration with PGP 5.0 and later
- Support for client synchronization update requests
- Import/export of standard PGP keyrings and ASCII armored files

SYSTEM REQUIREMENTS

Sun Solaris (SPARC) 2.5.1 or later, Microsoft Windows NT Server (Intel) 4.0

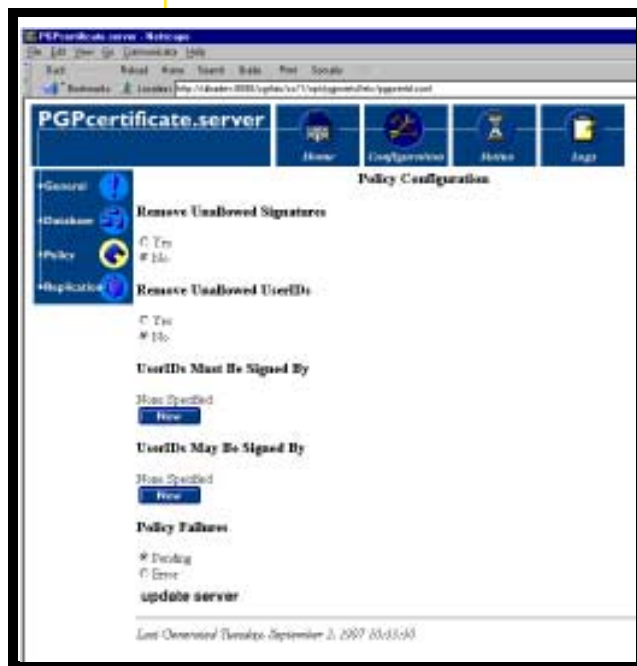
64 MB of RAM or greater

15 MB of disk space for software

Additional disk space for database (10 to 500 MB)

Network interface

CD-ROM drive



Easy administration of PGP Certificate Servers through web interface.

FOR MORE INFORMATION

address: Pretty Good Privacy
2121 S. El Camino Real
San Mateo, CA, 94403

telephone: 602.944.0773
toll free: 888.747.3011
internet: www.pgp.com

© 1997 Pretty Good Privacy, Inc. All rights reserved. PGP and Pretty Good Privacy are registered trademarks of Pretty Good Privacy, Inc. This software uses public key algorithms described in U.S. patent numbers 4,200,770, 4,218,582, 4,405,829, and 4,424,414, licensed exclusively by Public Key Partners; the IDEA cryptographic cipher described in U.S. patent number 5,214,703, licensed from Ascom Tech AG; and the Northern Telecom Ltd. CAST Encryption Algorithm, licensed from Northern Telecom, Ltd. IDEA is a trademark of Ascom Tech AG. Other product names are trademarks of their respective owners.

301-600-00002



PRETTY GOOD PRIVACY